

MLS Area 1B

Residential Statistics



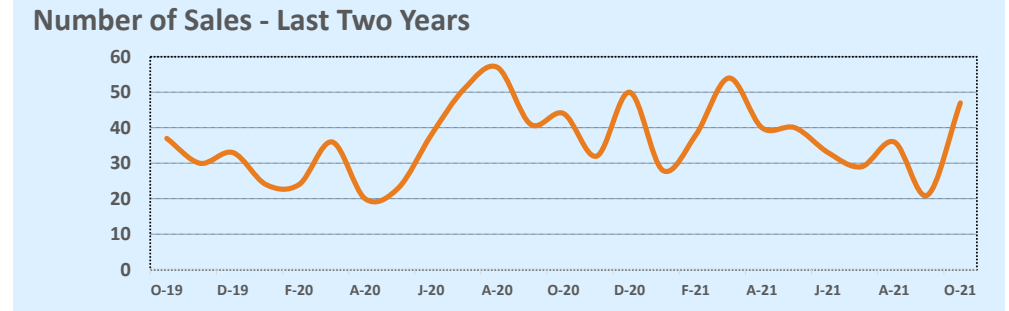
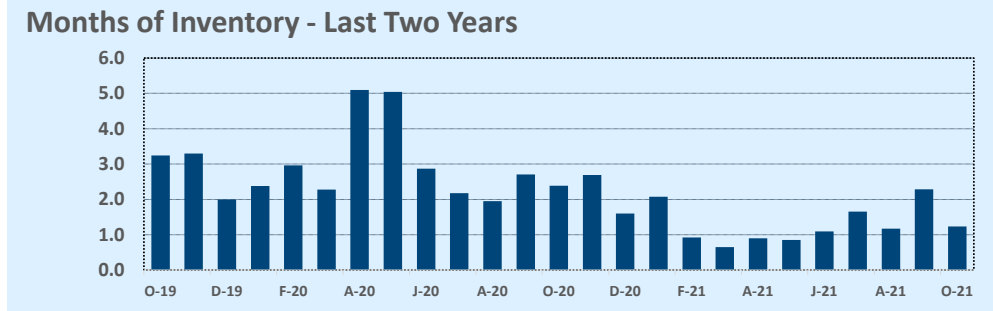
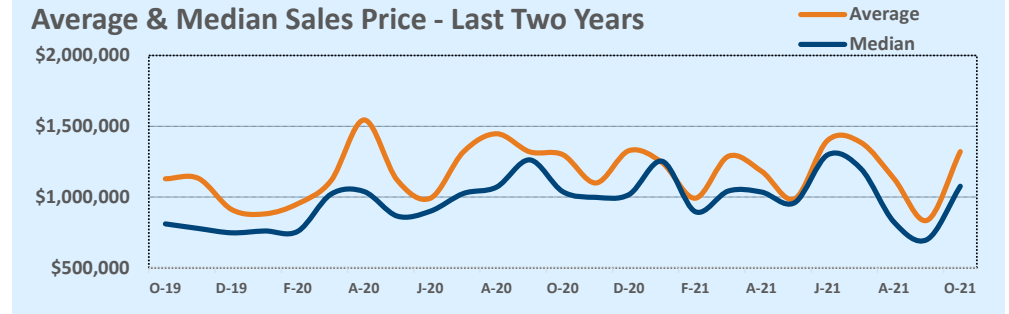
October 2021

Listings	This Month			Year-to-Date		
	Oct 2021	Oct 2020	Change	2021	2020	Change
Single Family Sales	22	30	-26.7%	212	262	-19.1%
Condo/TH Sales	25	14	+78.6%	154	96	+60.4%
Total Sales	47	44	+6.8%	366	358	+2.2%
New Homes Only	1	3	-66.7%	13	19	-31.6%
Resale Only	46	41	+12.2%	353	339	+4.1%
Sales Volume	\$62,070,197	\$57,159,000	+8.6%	\$435,456,852	\$439,430,304	-0.9%
New Listings	36	45	-20.0%	417	558	-25.3%
Pending	--	--	--	--	--	--
Withdrawn	2	5	-60.0%	21	31	-32.3%
Expired	2	5	-60.0%	21	31	-32.3%
Months of Inventory	1.2	2.4	-48.3%	N/A	N/A	--

Price Range	This Month			Year-to-Date		
	New	Sales	DOM	New	Sales	DOM
\$149,999 or under	--	--	--	1	--	--
\$150,000- \$199,999	--	--	--	3	1	14
\$200,000- \$249,999	--	1	6	3	3	7
\$250,000- \$299,999	--	3	31	16	19	61
\$300,000- \$349,999	--	--	--	9	13	27
\$350,000- \$399,999	2	--	--	38	17	23
\$400,000- \$449,999	1	2	57	10	12	20
\$450,000- \$499,999	--	2	8	11	15	40
\$500,000- \$549,999	--	1	15	8	12	43
\$550,000- \$599,999	--	1	6	10	10	61
\$600,000- \$699,999	--	2	4	10	11	60
\$700,000- \$799,999	1	1	5	16	18	20
\$800,000- \$899,999	1	4	71	20	21	44
\$900,000- \$999,999	2	5	57	34	25	38
\$1M - \$1.99M	15	21	36	146	152	34
\$2M - \$2.99M	7	2	50	44	23	35
\$3M+	7	2	122	38	14	57
Totals	36	47	41	417	366	37

Average	This Month			Year-to-Date		
	Oct 2021	Oct 2020	Change	2021	2020	Change
List Price	\$1,310,392	\$1,349,998	-2.9%	\$1,167,848	\$1,278,339	-8.6%
List Price/SqFt	\$583	\$489	+19.3%	\$535	\$477	+12.0%
Sold Price	\$1,320,642	\$1,299,068	+1.7%	\$1,189,773	\$1,227,459	-3.1%
Sold Price/SqFt	\$593	\$474	+25.1%	\$549	\$464	+18.4%
Sold Price / Orig LP	101.6%	97.1%	+4.6%	103.0%	97.4%	+5.7%
Days on Market	41	41	-0.7%	37	45	-17.0%

Median	This Month			Year-to-Date		
	Oct 2021	Oct 2020	Change	2021	2020	Change
List Price	\$1,076,000	\$1,062,000	+1.3%	\$996,000	\$990,000	+0.6%
List Price/SqFt	\$571	\$449	+27.2%	\$519	\$454	+14.2%
Sold Price	\$1,076,000	\$1,037,500	+3.7%	\$1,032,250	\$957,500	+7.8%
Sold Price/SqFt	\$581	\$434	+33.9%	\$529	\$439	+20.3%
Sold Price / Orig LP	100.0%	97.9%	+2.2%	100.0%	98.1%	+2.0%
Days on Market	10	29	-65.5%	8	26	-68.6%



Based on information from the Austin Board of REALTORS® (alternatively, from ACTRIS). Neither the Board nor ACTRIS guarantees or is in any way responsible for its accuracy. The Austin Board of REALTORS®, ACTRIS and their affiliates provide the MLS and all content therein "AS IS" and without any warranty, express or implied. Data maintained by the Board or ACTRIS may not reflect all real estate activity in the market.